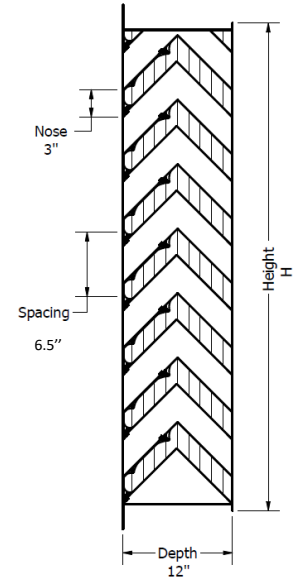
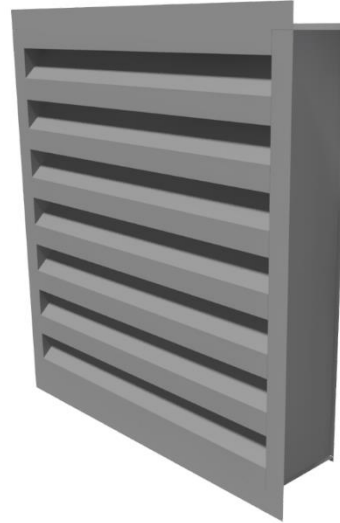


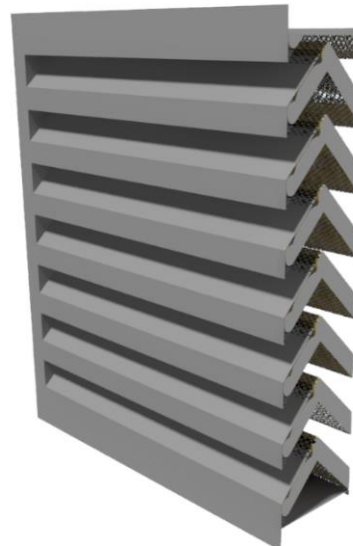
Performances (pour une persienne de 1219 x 1219 mm)	
Pourcentage d'air libre	30.9%
Surface d'air libre	4.95 pi ² (0.47 m ²)

Spécifications standard	
Matériel	Aluminium 6063-T5
Profondeur	304.80 mm (12'')
Épaisseur de la lame	50.80 mm (2'')
Épaisseur du cadre en "L"	2.06 mm (0.081'')
Épaisseur du cadre en "C"	1.83 mm (0.072'')
Angle des lames	45°
Centre en centre des lames	165.1 mm (6.5'')
Grillage	Aluminium perforé
Fini	Aluminium Naturel
Montage	Mécanique
Quincaillerie	Acier zingué
Poids approximatif	7.20 lb/pi ²



Surface libre pi² (m²)

		Largeur de la persienne [po (m)]										
		12 (0.30)	18 (0.46)	24 (0.61)	30 (0.76)	36 (0.91)	42 (1.07)	48 (1.22)	54 (1.37)	60 (1.52)	66 (1.68)	72 (1.83)
Hauteur de la persienne [po (m)]	12 (0.30)	0.14 (0.01)	0.47 (0.04)	0.66 (0.06)	0.84 (0.07)	1.03 (0.09)	1.22 (0.11)	1.41 (0.13)	1.6 (0.14)	1.79 (0.16)	1.98 (0.18)	2.16 (0.2)
	18 (0.46)	0.28 (0.02)	0.47 (0.04)	0.66 (0.06)	0.84 (0.07)	1.03 (0.09)	1.22 (0.11)	1.41 (0.13)	1.6 (0.14)	1.79 (0.16)	1.98 (0.18)	2.16 (0.2)
	24 (0.61)	0.42 (0.03)	0.7 (0.06)	0.99 (0.09)	1.27 (0.11)	1.55 (0.14)	1.83 (0.17)	2.12 (0.19)	2.4 (0.22)	2.68 (0.24)	2.97 (0.27)	3.25 (0.3)
	30 (0.76)	0.56 (0.05)	0.94 (0.08)	1.32 (0.12)	1.69 (0.15)	2.07 (0.19)	2.45 (0.22)	2.82 (0.26)	3.2 (0.29)	3.58 (0.33)	3.96 (0.36)	4.33 (0.4)
	36 (0.91)	0.7 (0.06)	1.17 (0.1)	1.65 (0.15)	2.12 (0.19)	2.59 (0.24)	3.06 (0.28)	3.53 (0.32)	4 (0.37)	4.48 (0.41)	4.95 (0.46)	5.42 (0.5)
	42 (1.07)	0.84 (0.07)	1.41 (0.13)	1.98 (0.18)	2.54 (0.23)	3.11 (0.28)	3.67 (0.34)	4.24 (0.39)	4.81 (0.44)	5.37 (0.49)	5.94 (0.55)	6.5 (0.6)
	48 (1.22)	0.99 (0.09)	1.65 (0.15)	2.31 (0.21)	2.97 (0.27)	3.63 (0.33)	4.29 (0.39)	4.95 (0.46)	5.61 (0.52)	6.27 (0.58)	6.93 (0.64)	7.59 (0.7)
	54 (1.37)	1.13 (0.1)	1.88 (0.17)	2.64 (0.24)	3.39 (0.31)	4.15 (0.38)	4.9 (0.45)	5.65 (0.52)	6.41 (0.59)	7.16 (0.66)	7.92 (0.73)	8.67 (0.8)
	60 (1.52)	1.27 (0.11)	2.12 (0.19)	2.97 (0.27)	3.82 (0.35)	4.66 (0.43)	5.51 (0.51)	6.36 (0.59)	7.21 (0.67)	8.06 (0.74)	8.91 (0.82)	9.76 (0.9)
	66 (1.68)	1.41 (0.13)	2.35 (0.21)	3.3 (0.3)	4.24 (0.39)	5.18 (0.48)	6.13 (0.56)	7.07 (0.65)	8.01 (0.74)	8.96 (0.83)	9.9 (0.92)	10.84 (1)
	72 (1.83)	1.55 (0.14)	2.59 (0.24)	3.63 (0.33)	4.66 (0.43)	5.7 (0.53)	6.74 (0.62)	7.78 (0.72)	8.81 (0.81)	9.85 (0.91)	10.89 (1.01)	11.93 (1.1)
	78 (1.98)	1.69 (0.15)	2.82 (0.26)	3.96 (0.36)	5.09 (0.47)	6.22 (0.57)	7.35 (0.68)	8.48 (0.78)	9.62 (0.89)	10.75 (0.99)	11.88 (1.1)	13.01 (1.2)
	84 (2.13)	1.83 (0.17)	3.06 (0.28)	4.29 (0.39)	5.51 (0.51)	6.74 (0.62)	7.97 (0.74)	9.19 (0.85)	10.42 (0.96)	11.64 (1.08)	12.87 (1.19)	14.1 (1.31)



Atténuation (Transmission Loss) – Performances acoustiques

Insonorisation de A vers B (A-B) selon les normes ASTM E336

Fréquence par bande d'octave (Hz)									
63	125	250	500	1000	2000	4000	8000	dB(A)	ASTC
7.3	4.3	12.9	17.8	28.1	32.5	31.2	32.3	16.3	17.6

Note : Performance avec laine 2.4lb/pi³, standard.