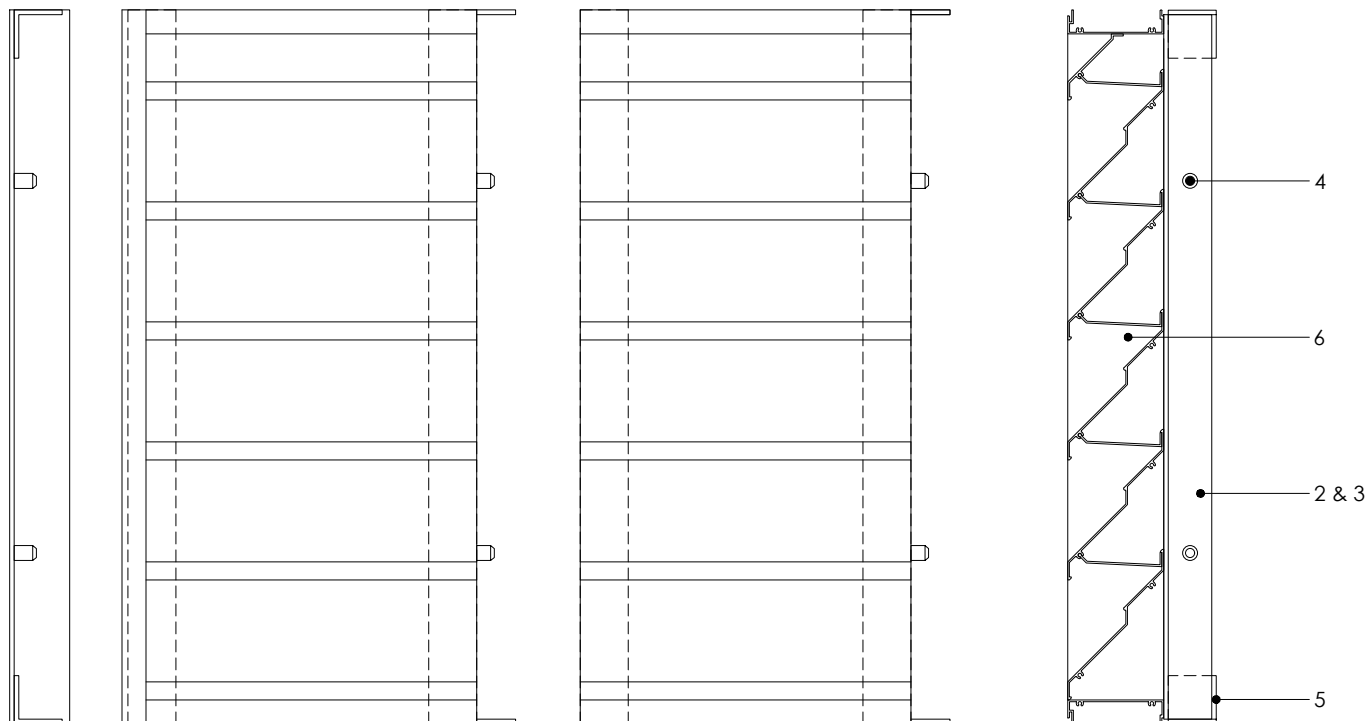


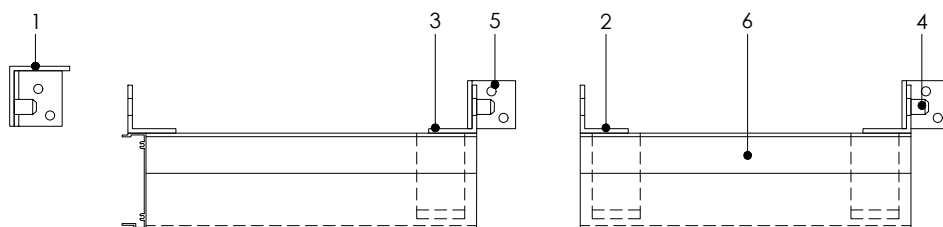
Technical sheet

Method permitting louver installation on building exteriors.



Elevation (outside view)

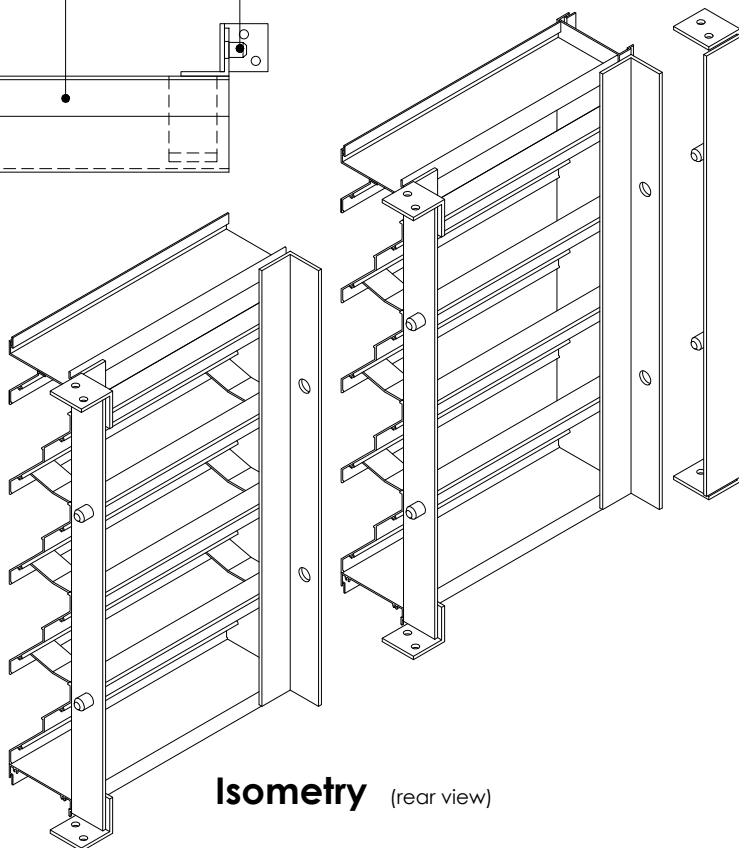
Section



Section

Material

- 1 - Starting angle : continuous aluminum angle with welded rods
- 2 - Female structure of the louver : pre-drilled aluminum angles to receive the welded rods
- 3 - Male structure of the louver : aluminum angle welded rods
- 4 - 16 mm Ø aluminum rod, welded to the male structure of the louver
- 5 - Attachment angle : aluminum angle welded to the male structure of the louver
- 6 - Louver (see available models)



Isometry (rear view)

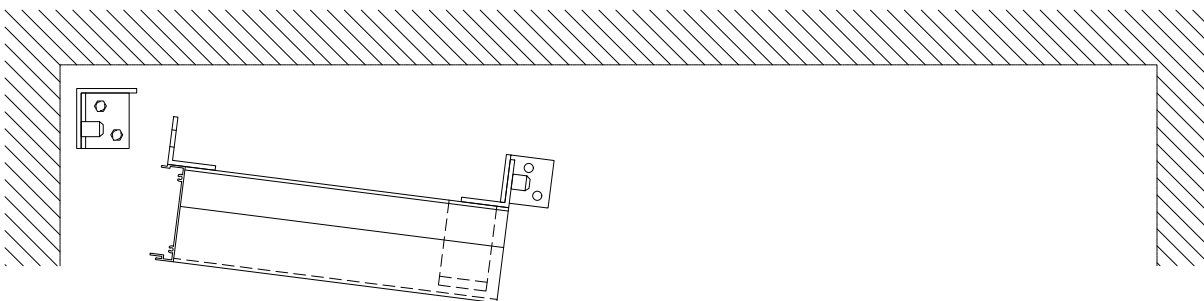
Technical sheet

Method permitting louver installation on building exteriors.

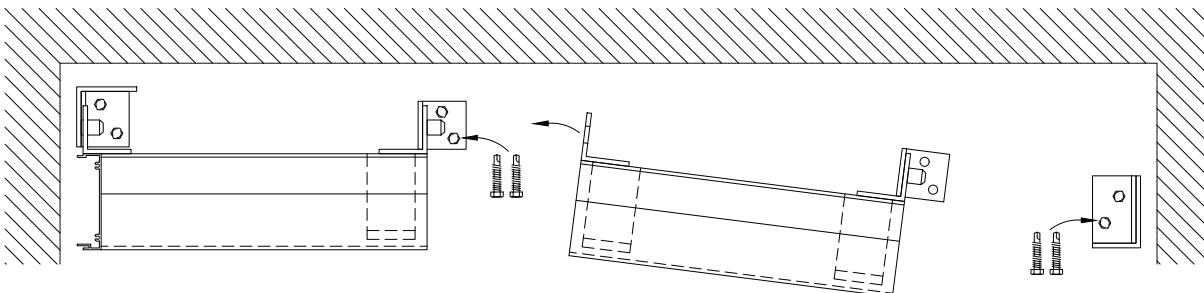
Assembly principle

Nailing strips must have adequate strenght to withstand the prescribed loads, and those of the louvers (by others).

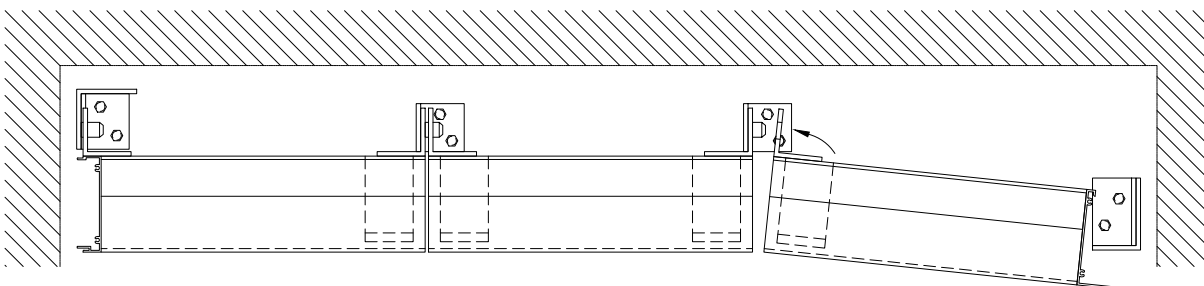
1 : Install the starting angle. Hook the first louver onto the starting angle.



2 : Fasten the louver to the wall using an attachment angle. Fasten the finishing angle.



3 : Install the other louvers.



4 : Install the final section and fasten it to the finishing angle.

