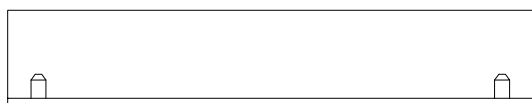
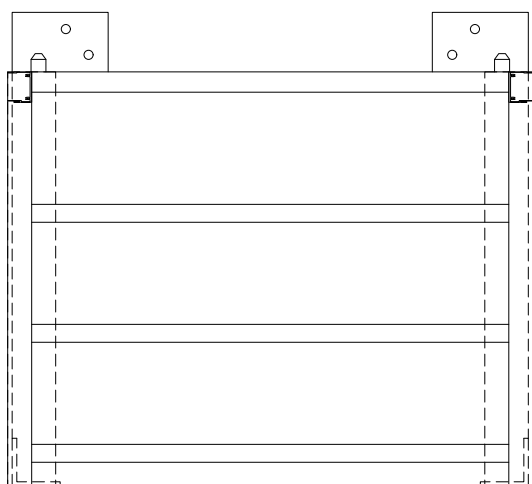
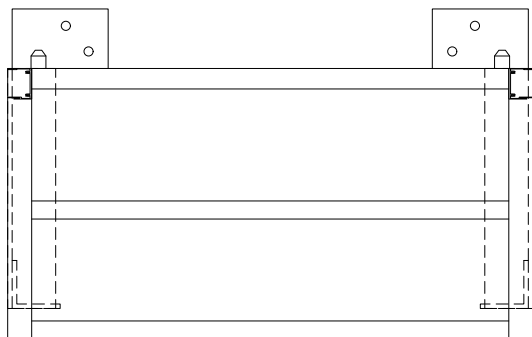
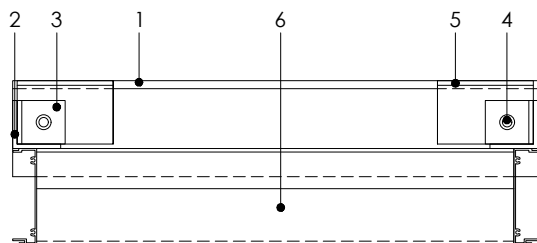


### Technical sheet

Method permitting louver installation on building exteriors.



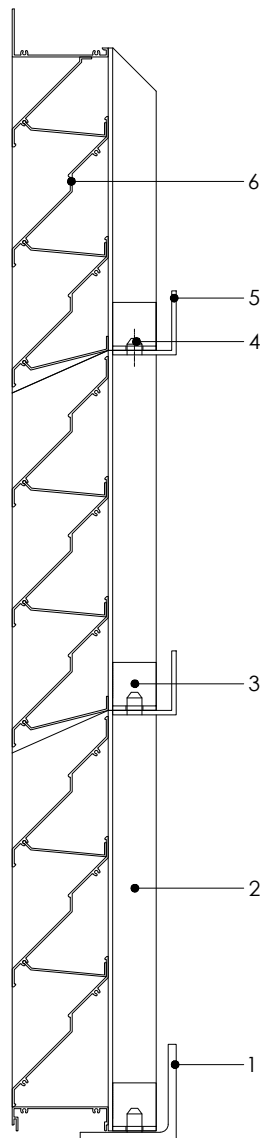
**Elevation** (outside view)



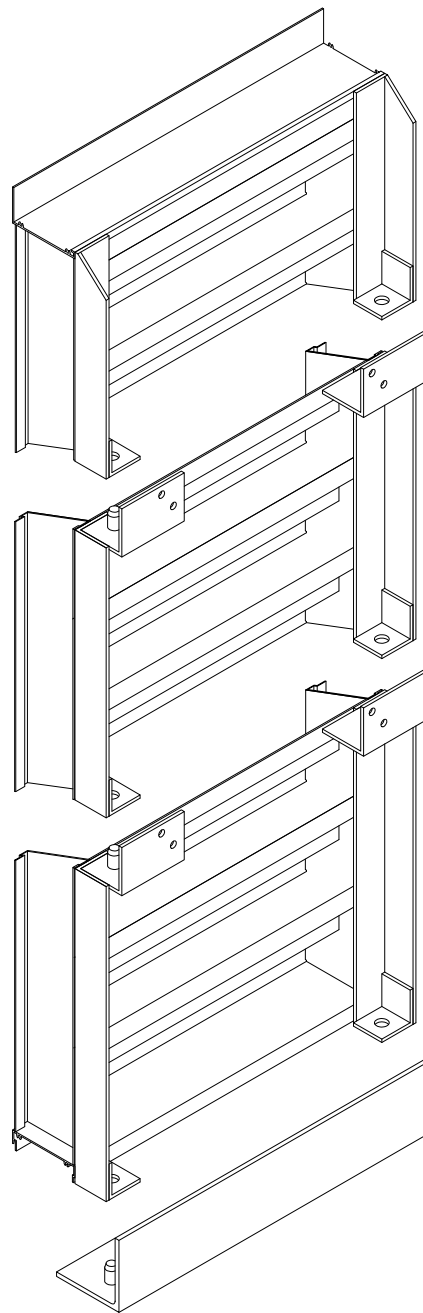
**Section**

### Material

- 1 - Starting angle : continuous aluminum angle with welded rods
- 2 - Louver structure : continuous angle
- 3 - Female structure welded to the louver : pre-drilled aluminum angles to receive the welded rods
- 4 - 16 mm Ø aluminum rod, welded to the attaching angle
- 5 - Attachment angle : aluminum angle with welded rods (male), welded to the louver structure
- 6 - Louver (see available models)



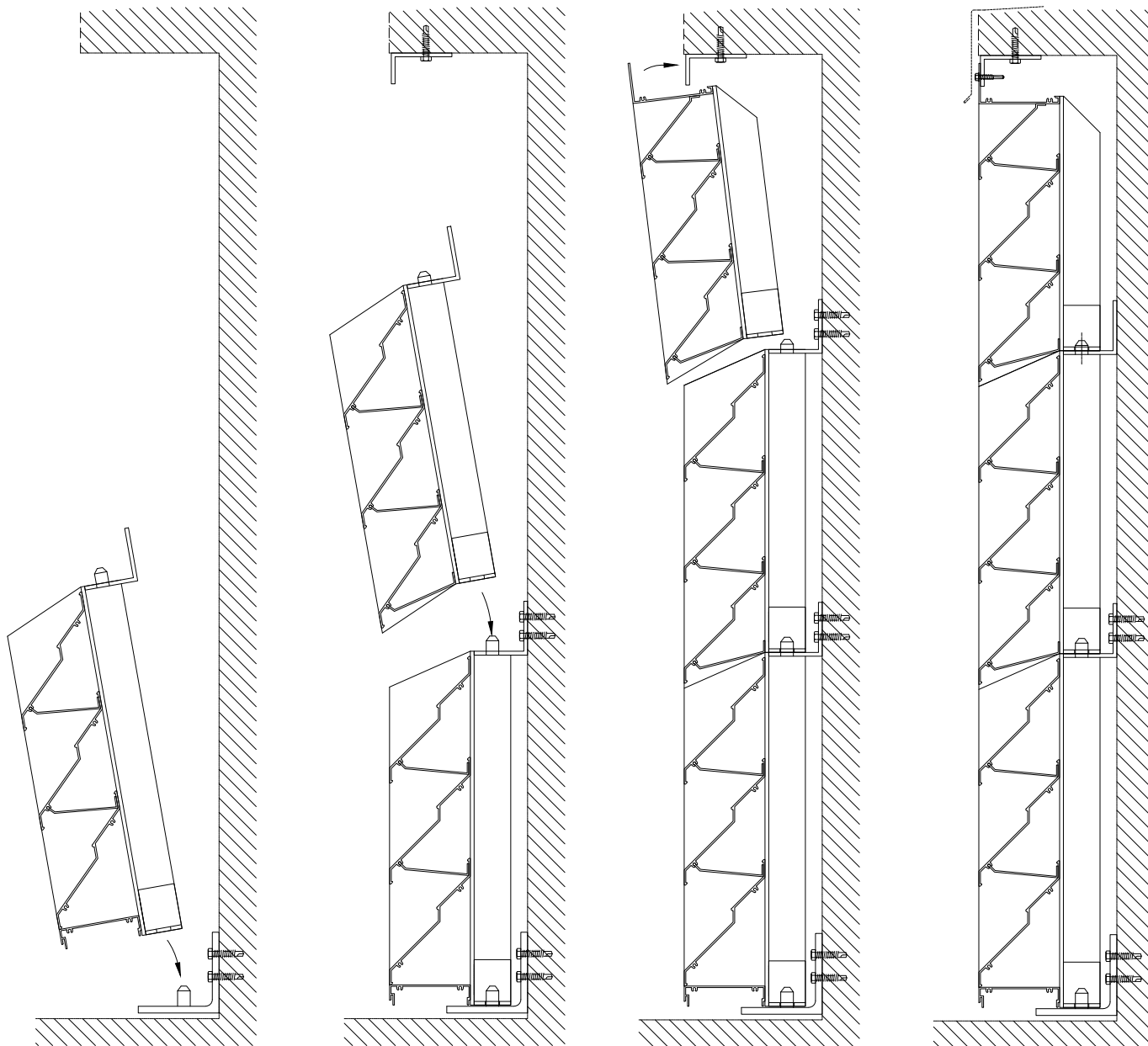
**Section**



**Isometry** (rear view)

### Assembly principle

Nailing strips must have adequate strenght to withstand the prescribed loads, and those of the louvers (by others).



1 : Install the starting angle. Hook the first louver onto the starting angle.

2 : Fasten the louver to the wall using an attachment angle. Fasten the finishing angle.

3 : Install the other louvers.

4 : Install the final section and fasten it to the finishing angle.