

Performance Ratings*	
Performance of 48 in. x 48 in. (1219 x 1219 mm) Louver	
Percentage of free area	31,0 %
Free area	4,95 sq.ft. (0,460 m <sup>2</sup> )
Water penetration @ 0,010 oz/sq.ft.(3,05 gr/m <sup>2</sup> ) =	733 fpm (3,724 m/s)
Free area intake velocity @ Pressure drop 0,15 in. H <sub>2</sub> O (3,81 mm H <sub>2</sub> O) =	992 fpm (5,04 m/s)

\*performance ratings excluded bird screen and other accessories.



Standard specifications	
Material	Aluminum 6063-T5
Depth	152,4 mm (6")
"L" frame thickness	2,06 mm (0,081")
"U" frame thickness	1,83 mm (0,072")
Blade thickness	2,40 mm (0,094")
Blade	Extruded blade with perforated sheet
Blade insulation	Roxul 6lbs/pi <sup>3</sup>
Blades angle	45°
Center to center	152,40 mm (6")
Birdscreen	Galvanized steel
Finish	Mill finish
Assembly	Mechanical
Hardware	Galvanized steel
Approximate weight	7,5 lbs/sq.ft.
Minimum Size	305 mm W x 457 mm H (12" W x 18" L)
Maximum Single	Unlimited**
Section Size	**The louver will be divided into sections, each with maximum size of 35 ft <sup>2</sup> (3,25 sq. m) to facilitate handling (width or height should not exceed 8 ft).

### Free area chart (sq.ft. & m<sup>2</sup>)

po	12	18	24	30	36	42	48	54	60	66	72
m	0,30	0,46	0,61	0,76	0,91	1,07	1,22	1,37	1,52	1,68	1,83
12	0,16	0,25	0,34	0,44	0,53	0,62	0,72	0,79	0,88	0,97	1,07
0,30	0,014	0,023	0,032	0,041	0,049	0,058	0,067	0,073	0,082	0,090	0,099
18	0,31	0,50	0,69	0,87	1,06	1,25	1,44	1,58	1,76	1,95	2,14
0,46	0,029	0,046	0,064	0,081	0,099	0,116	0,133	0,146	0,164	0,181	0,199
24	0,47	0,75	1,03	1,31	1,59	1,87	2,15	2,36	2,65	2,93	3,21
0,61	0,044	0,070	0,096	0,122	0,148	0,174	0,200	0,220	0,246	0,272	0,298
30	0,62	1,00	1,37	1,75	2,12	2,50	2,87	3,15	3,53	3,90	4,28
0,76	0,058	0,093	0,128	0,162	0,197	0,232	0,267	0,293	0,328	0,363	0,397
36	0,78	1,25	1,72	2,19	2,65	3,12	3,59	3,94	4,41	4,88	5,35
0,91	0,073	0,116	0,160	0,203	0,247	0,290	0,334	0,366	0,410	0,453	0,497
42	0,94	1,50	2,06	2,62	3,19	3,75	4,31	4,73	5,29	5,86	6,42
1,07	0,087	0,139	0,191	0,244	0,296	0,348	0,400	0,440	0,492	0,544	0,596
48	1,09	1,75	2,40	3,06	3,72	4,37	4,95	5,52	6,18	6,83	7,49
1,22	0,102	0,162	0,223	0,284	0,345	0,406	0,460	0,513	0,574	0,635	0,696
54	1,25	2,00	2,75	3,50	4,25	5,00	5,75	6,31	7,06	7,81	8,56
1,37	0,116	0,186	0,255	0,325	0,395	0,464	0,534	0,586	0,656	0,725	0,795
60	1,41	2,25	3,09	3,94	4,78	5,62	6,46	7,10	7,94	8,78	9,63
1,52	0,131	0,209	0,287	0,366	0,444	0,522	0,601	0,659	0,738	0,816	0,894
66	1,56	2,50	3,44	4,37	5,31	6,25	7,18	7,89	8,82	9,76	10,70
1,68	0,145	0,232	0,319	0,406	0,493	0,580	0,667	0,733	0,820	0,907	0,994
72	1,72	2,75	3,78	4,81	5,84	6,87	7,90	8,67	9,71	10,74	11,77
1,83	0,160	0,255	0,351	0,447	0,543	0,638	0,734	0,806	0,902	0,997	1,093
78	1,87	3,00	4,12	5,25	6,37	7,50	8,62	9,46	10,59	11,71	12,84
1,98	0,174	0,279	0,383	0,487	0,592	0,696	0,801	0,879	0,984	1,088	1,193
84	2,03	3,25	4,47	5,68	6,90	8,12	9,34	10,25	11,47	12,69	13,91
2,13	0,189	0,302	0,415	0,528	0,641	0,754	0,868	0,952	1,066	1,179	1,292

Louver height

Louver width

Sound performance									
Octave band/frequency (Hz)	63	125	250	500	1000	2000	4000	8000	STC
Transmission loss (dB)	3	5	3	5	10	12	11	10	9
Free field noise reduction (dB)	9	11	9	11	16	18	17	16	



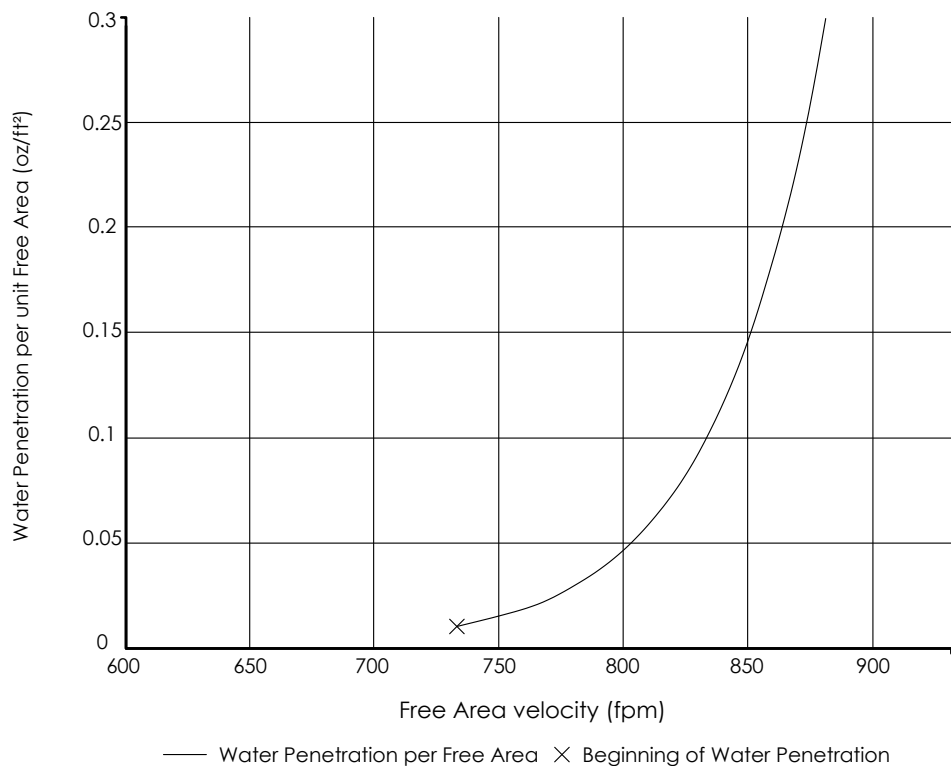
Cometal factory based in Lévis, province of Quebec



Basic warranty for mill finish louver

### Water Penetration

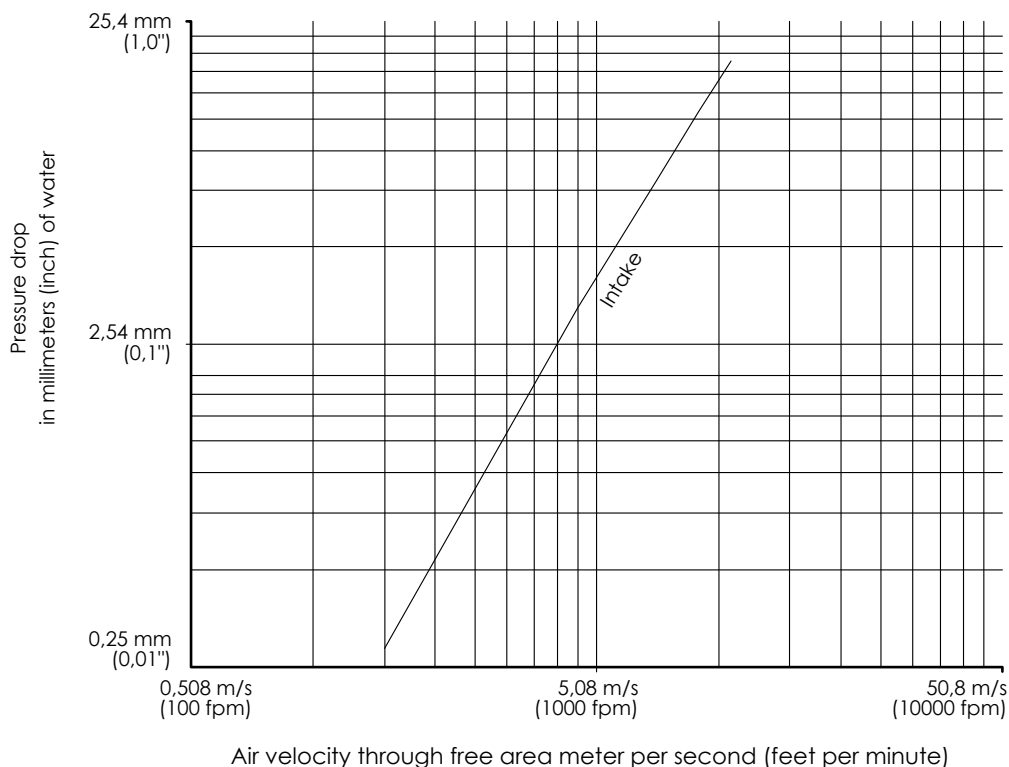
Test Size 48 in. x 48 in. (1219 mm x 1219 mm) Test duration of 15 minutes



The AMCA Water Penetration Test provides a method for comparing various louver models and designs as to their efficiency in resisting the penetration of rainfall under specific laboratory test conditions. The beginning point of water penetration is defined as that velocity where the water penetration defined as that velocity where the water penetration curve projects through 0.01 oz (3 g) of water (penetration) per sq. ft. (m²) of louver area. \*\* The beginning point of water penetration for model 3306-45AC is 733 fpm free area velocity. These performance ratings do not guarantee a louver to be waterproof or stormproof and should be used in combination with other factors including good engineering judgement in selecting louver model.

### Pressure drop

Test Size 48 in. x 48 in. (1219 mm x 1219 mm)



The resistance to airflow (pressure drop) varies depending on louver application (air intake or air exhaust). Free area velocities (shown) are higher than average velocity through the overall louver size.

### CERTIFICATION AMCA



Cometal inc. certifies that the 3306-45AC louvers shown herein are licensed to bear the AMCA Seal. The ratings shown are based on tests and procedures performed in accordance with AMCA Publication 511 and comply with the requirements of the AMCA Certified Ratings Program. The AMCA Certified Ratings Seal applies to Water Penetration and Air ratings. Louver were tested in accordance with AMCA Standard 500-L.

## Specifications

<b>Material</b>	Aluminum 6063-T5
<b>Blades</b>	Thickness 2,04 mm (0,079")
<b>L frame</b>	Thickness 2,06 mm (0,081")
<b>U frame</b>	Thickness 1,83 mm (0,072")

## Available frames

- "L" frame
- "U" frame
- Exposed mullions (nested frames)

## Available finish

- Mill
- Anodized clear 10 microns
- Anodized clear 18 microns
- Anodized light bronze
- Anodized architectural bronze
- Anodized champagne
- Anodized black
- Acrylic polyurethane coating\*
- Liquid super durable coating \*
- Duranar baked enamel \*
- Duranar XL baked enamel\*
- Powder coating \*

Color : \_\_\_\_\_

\* Painted on surfaces visible from the outside only

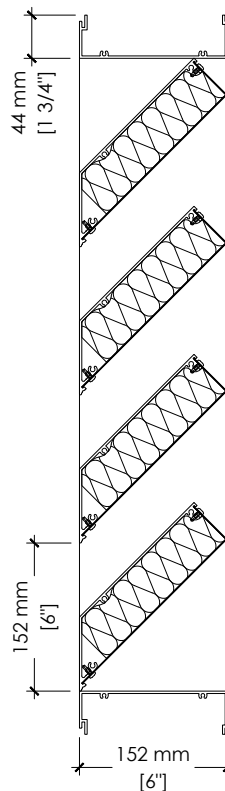
## Birdscreens and accessories

- Galvanized steel (standard)
- Expanded aluminum
- Woven aluminum
- Stainless steel
- Aluminum mosquito net
- Fiberglass mosquito net
- Permanent filter
- Birdscreen frame
- Non-insulated obturating panel 0,8 mm [0,032"]
- Insulated obturating panel 50 mm [2"]

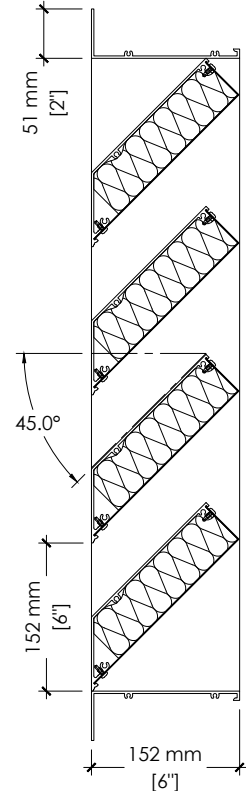
Finish : \_\_\_\_\_

Color : \_\_\_\_\_

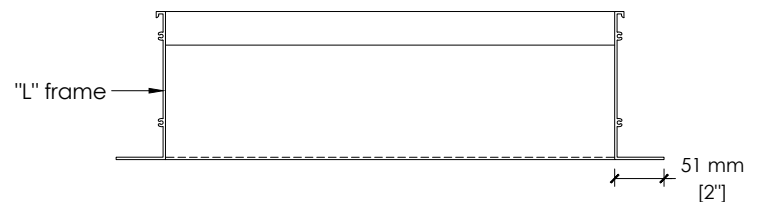
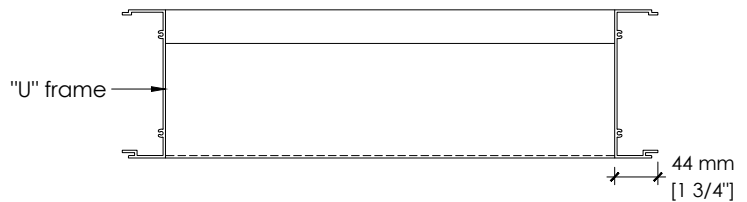
Others : \_\_\_\_\_



"U" frame  
(CU)



"L" frame  
(CL)



## Project

Name : \_\_\_\_\_

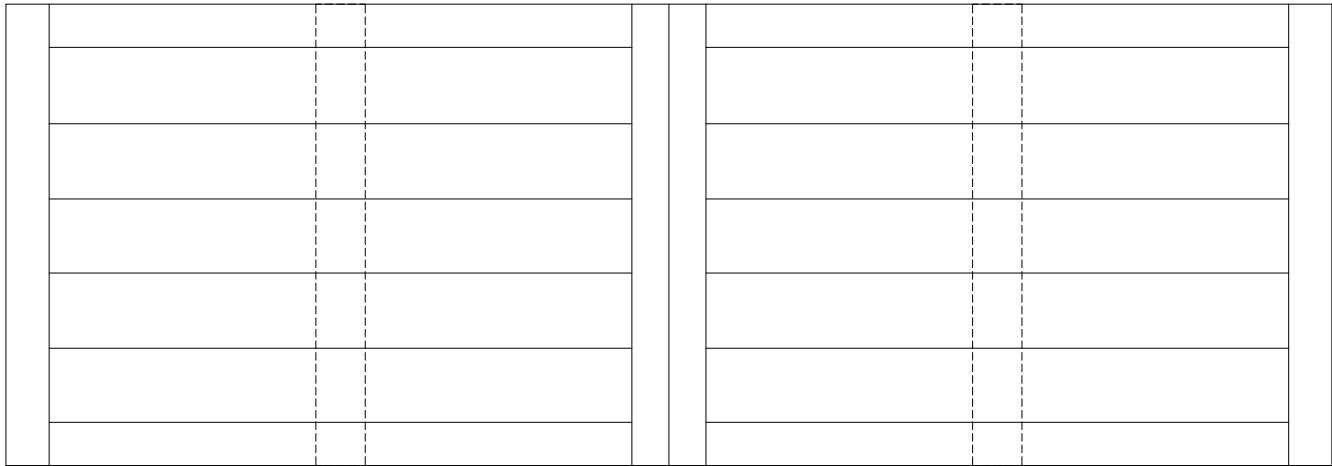
Arch./Eng.: \_\_\_\_\_

Contractor : \_\_\_\_\_

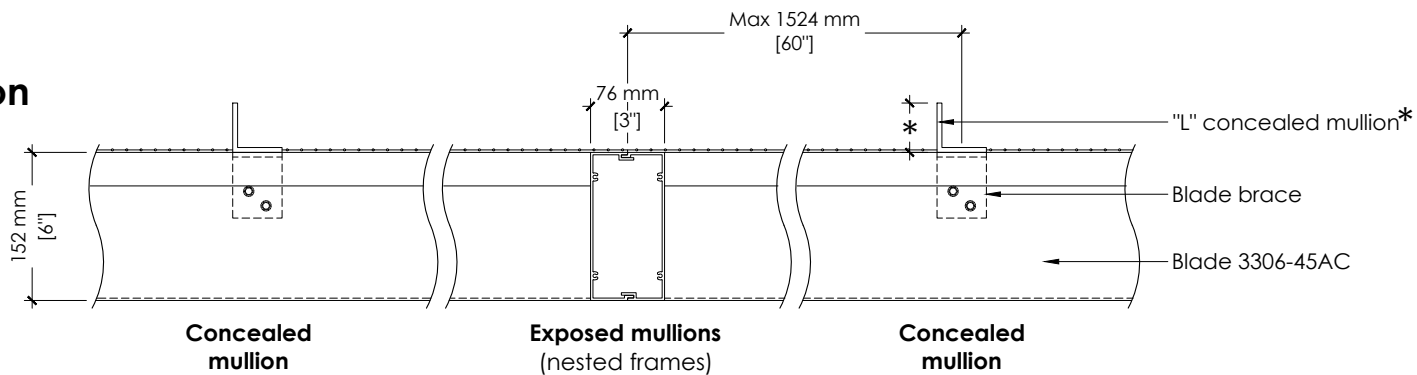
# OF / # PO : \_\_\_\_\_

Date : \_\_\_\_\_

### Elevation (outside view)



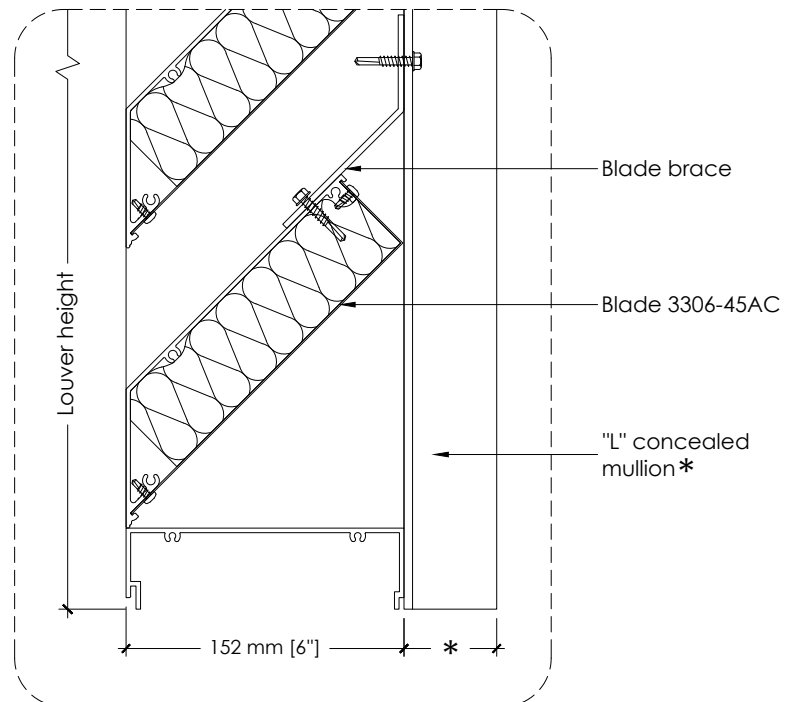
### Section



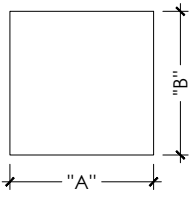
### louver concealed mullion

For louvers more than 1524 mm (60") wide, a supporting structure is needed behind the louver

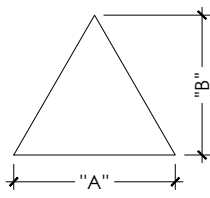
		*Louver concealed mullion dimension
Louver height	Less than 2438 mm (96")	51 x 51 x 4,7 mm angle (2" x 2" x 3/16")
	from 2438 mm (96") to 3658 mm (144")	51 x 76 x 4,7 mm angle (2" x 3" x 3/16")
	more than 3658 mm (144")	Please see the engineering departement



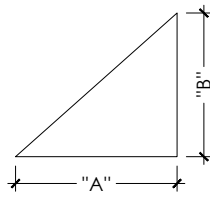
### Shapes



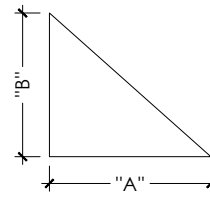
Rectangle / square



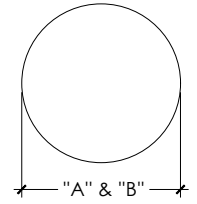
Triangle



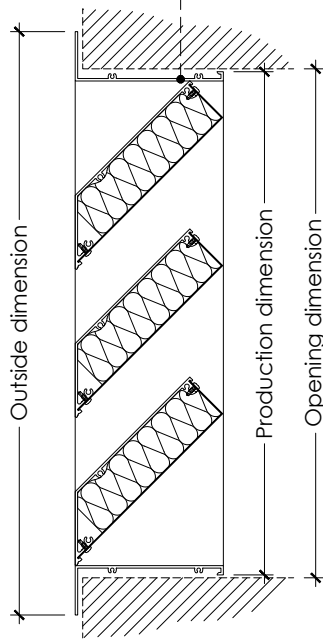
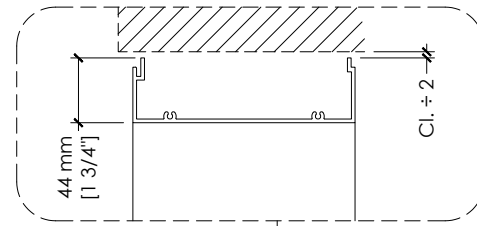
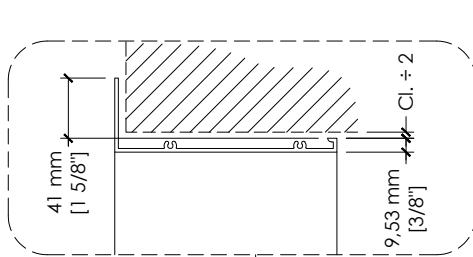
Left triangle



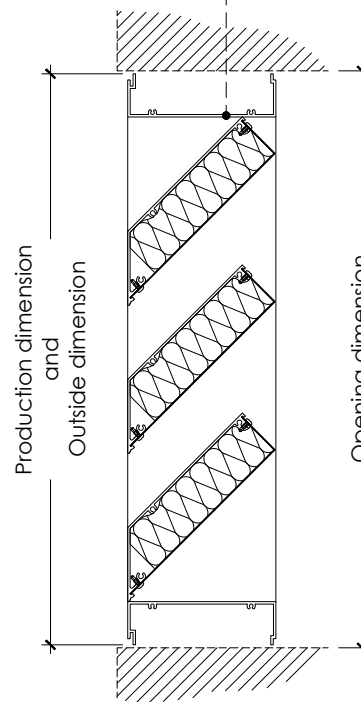
Right triangle



Not available



"L" frame (CL)



"U" frame (CU)

Outside dimensions

Opening dimensions

Production dimensions

Item	Qty	Dimensions		Number of sections		Clearance (6 mm (1/4") minimum recommended)	Notes
		Width "A"	Height "B"	wide	High		